

Greater Manchester Transport Strategy 2040: A Sustainable Urban Mobility Plan for the Future

Item 6

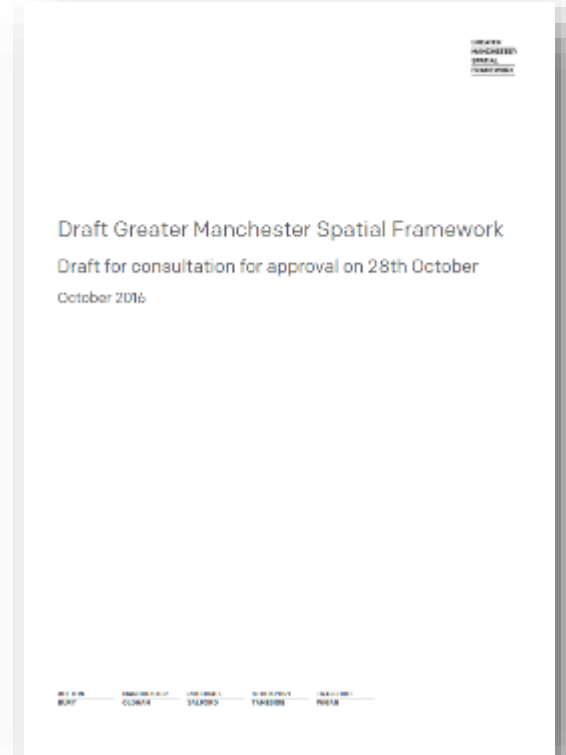
Nicola Kane, TfGM



A new long-term strategic context for GM

**our
people
our
place**

The Greater Manchester Strategy



Places

People

Assets



Supporting sustainable economic growth

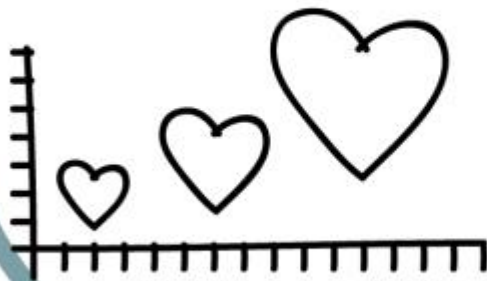


Protecting our environment

Transport Vision

World class connections that support long-term, sustainable economic growth and access to opportunity for all

Improving quality of life for all



Developing an innovative city-region



Integration at the heart of our 2040 Strategy

Old way

By mode



By district



Integration at the heart of our 2040 Strategy

Old way

By mode



By district



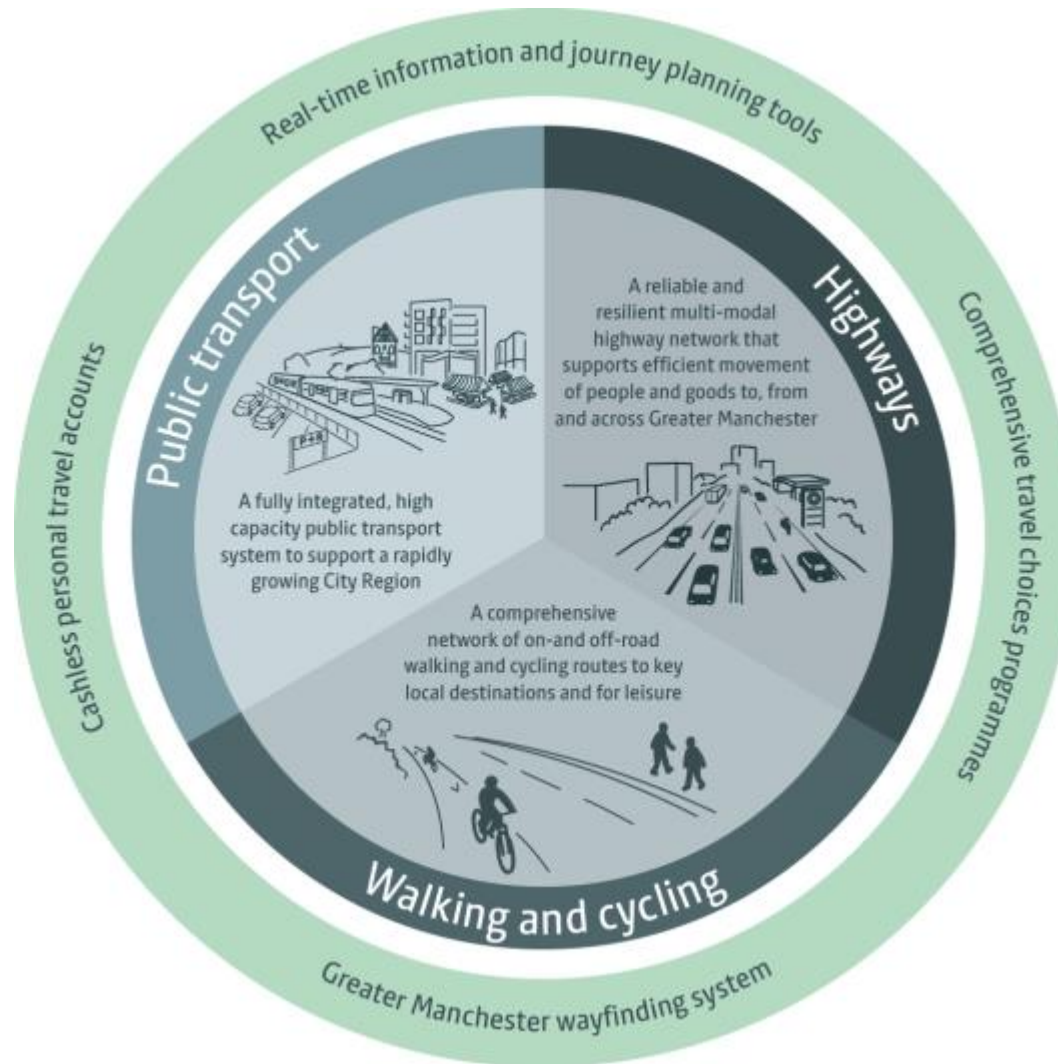
New way



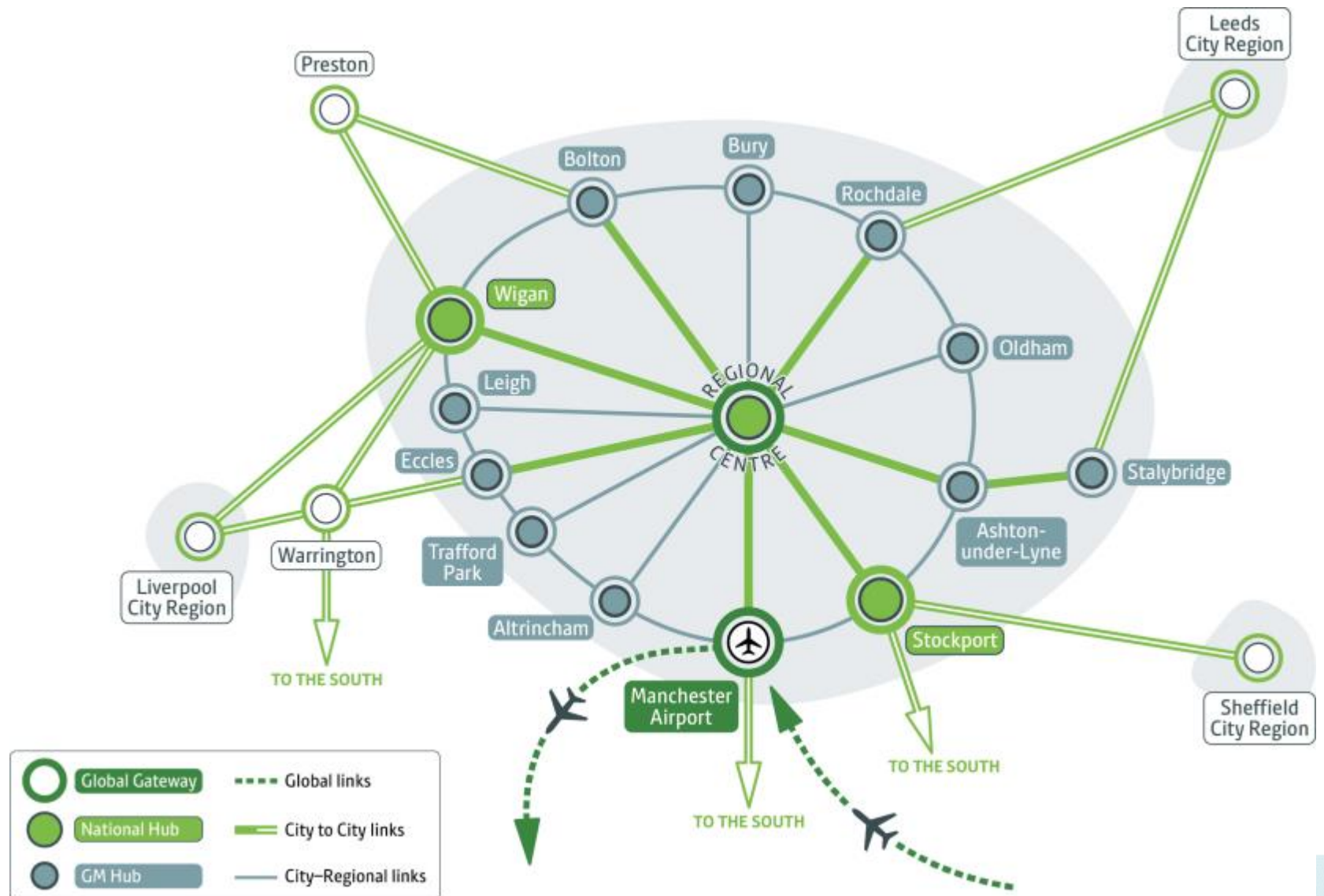
Our network principles



Our Modal Principles



Our aim is for a fully integrated public transport network



2040 Transport Strategy Consultation

Qualitative feedback: common themes

Integration

Rail

- Interchanging
- Flexibility
- Personal security
- Accessibility
- Reliability
- Freight potential

Bus

- Pricing
- Cashless payments
- Reduction / withdrawal of services
- Reliability
- Information
- Night buses

Metrolink

- Pricing / ticketing
- Capacity
- Reliability
- Weekend services
- Car parking
- Network Expansion suggestions

Highways

- Maintenance
- Smart traffic signals
- Roadworks
- Managing disruption
- Bus lanes

Active Travel

- Safety
- Cycle storage
- Education / training
- Learning from international best practice